

BURLINGTON EAST PRESBYTERIAN CHURCH
MINISTER: THE REV. BRUCE McANSH
ORGANIST: RINATHA KRIGE
Tel. No. (905) 637-5155 - Email: bepc@bellnet.ca
Website: www.burlingtoneast.net

March 27, 2016

10:30 a.m.

WE GATHER IN GOD
MUSICAL PRELUDE

* ENTRY OF GOD'S WRITTEN WORD

* PROCESSIONAL HYMN: (Hymn No. 299, verse 1)

GREETINGS & ANNOUNCEMENTS

CALL TO WORSHIP - EASTER SUNDAY READING (see insert)

* HYMN: Praise to the Lord, the Almighty 321

PRAYER OF ADORATION & CONFESSION & THE LORD'S PRAYER

ANTHEM: "JOY RETURNS IN THE MORNING"

WE HEAR THE WORD OF GOD

*HYMN: He is Lord 252

Let the children gather with the Minister **during** the singing of verse 1
CHILDREN'S TIME followed by singing verse 1 again

RESPONSIVE PSALM: Psalm 118 : 1,2, 14 - 24

OLD TESTAMENT: Isaiah 65 : 17 - 25 (Page 696)

NEW TESTAMENT: 1 Corinthians 15 : 19 - 26 (Page 176)

GOSPEL READING: John 20 : 1 - 18 (Page 114)

* HYMN: Christ the Lord is risen today 247

SERMON: "THE KING IS RISEN. HE IS RISEN INDEED"

WE RESPOND IN FAITH

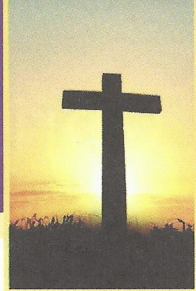
OFFERING

* DOXOLOGY HYMN: (Hymn No. 79)

* PRAYER OF DEDICATION

PRAYERS OF THE PEOPLE

Easter Sunday



*Written by The Reverend Karen Horst
Produced by Presbyterian World Service & Development*

One: Change is coming, for God's plans are unfolding. Jesus has conquered death and is risen. Hallelujah!

All: God's only son was given so that whoever believes in him will not perish but have eternal life. We celebrate Christ's victory and the power of God's love to transform the world and each one of us.

One: Christ has come and he promises that he will come again.

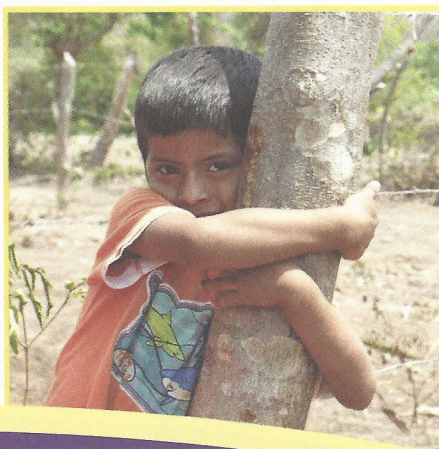
All: We wait with eager longing and we serve Christ knowing his promises are true.

One: Meanwhile, we have the gift of the Holy Spirit to comfort, guide and enlighten us. We can do our best to bring about Christ's realm in our time and place. We can live our lives as Christ's hands and feet, showing others Christ's love.

All: Change is coming, for God's plans are unfolding.

One: Let us pray.

All: Loving God, we know because of Christ that love is stronger than hatred, forgiveness is stronger than revenge and compassion is stronger than legalism. We know that humility can defeat domination and that obedience can defeat selfish ambition. We are an Easter people, redeemed by God's sacrificial gift of love through Jesus Christ. We are an Easter people filled with joy and peace in knowing our Saviour, Jesus Christ. We are an Easter people, trusting Christ as we journey through life participating in God's sovereign plans that continue to unfold. We are an Easter people filled with hope. AMEN and AMEN.



**Presbyterian
World Service
& Development**

WeRespond.ca

50 Wynford Drive, Toronto, ON M3C 1J7
1-800-619-7301 • pwsd@presbyterian.ca

WE GO FORTH IN GOD

*HYMN

Thine be the glory

258

*BENEDICTION

*CHORALE

MUSICAL POSTLUDE

* - *Stand as you are able*

WELCOME TO BURLINGTON EAST PRESBYTERIAN CHURCH Worship Service. The Duty Elder is available for your assistance. If you are a visitor and are considering this Church as your new home congregation, please make sure that you sign the Guest Book so that Rev. McAnsh may contact & welcome you. A Nursery is available in the McRae wing. Please join us for Fellowship Hour following the Worship Service.

FLOWERS in the sanctuary are placed by Ann Bone in loving memory of her husband, Keith Bone.

BEPC @ A GLANCE

	March 27 Easter Sunday	April 3	April 10
Duty Elder	Holly MacLeod	Beryl Gorrie	Donna Beaudin
Responsive Reader	Holly MacLeod	Beryl Gorrie	Donna Beaudin
Ushers	Bob Dickison Halyna Dickison	Jim Allan Jean Fortune	Jim McIlquham Beryl Gorrie
Greeters	May Neilson Heather Needham	-	Jim & Isabel McIlquham
Flowers	Ann Bone	Lois Bailie	Marg Harris
Fellowship	NO FELLOWSHIP	Sara Steffler, McIntyres and Rodgersons	Sue Evans and Friends
Sunday School	NO SUNDAY SCHOOL	Brenda Reindl Denise Crockford	Susan Stock Brenda Reindl
Nursery Duty	Ann David	Sharon Wilhelm	Jane Wiseman

EVENTS/MEETINGS

Mon., March 28 th	- Social Club	- Douglas Hall	- 1:00 pm
	- Fin. & Maint. Meeting	- Quiet Room	- 7:30 pm
Wed., March 30	- Technology Group	- Douglas Hall	- 7:30 pm
Thurs., March 31 st	- Men's Social Club	- Douglas Hall	- 1:00 pm
	- Choir Practice	- Sanctuary	- 7:00 pm

Prayer Group

The Prayer Group is starting to meet again on Thursday, March 31
5.45 – 6.45 pm in the Quiet Room.

If you have any questions, please contact Alison Hird.

10TH ANNUAL BURLINGTON LEADERSHIP PRAYER BREAKFAST

Thursday, 05 May 2016 at 06:45 am

Burlington Convention Centre
1120 Burloak Drive, Burlington



GUEST SPEAKER: Lorna Dueck

Lorna Dueck is the Executive Producer on the TV show "Context" on Global TV and a regular commentary writer for The Globe and Mail.

Tickets are \$25/person (individual) or \$250/table of 10 plus fees and available to purchase online.

For more information, see the bulletin board at the back entrance of the church or contact Gord Fielding or Beryl Gorrie.



Daily Bread Devotional Booklets

If you are interested in receiving the Daily Bread Devotional Booklets every month, please contact Pat Patterson or call the Church Office.



**THE FLOWERS IN THE CHURCH ARE PLACED IN MEMORY OF
LOVED ONES**

PLACED BY

Mike & Mary Black

Nancy Capstick

Diane Closson

Ann David

Ron & Janine Dekker

Bob & Halyna Dickison

Mary Eidsforth & Lorna Jack

Dorothy Fabian

Wayne Freeman

Beryl Gorrie

Sandra Henderson

Susan Lee/Stuart Lawton

Doreen Lowbridge

Rev. Bruce & Donna McAnsh

Jim & Isabel McIlquham

Shirley Moffatt

Godfrey W. Owen

Brenda Wasser

Ian & Kathy Wilson

Jane Wiseman

David Wood

IN LOVING MEMORY OF

Our Grandson, Jonathan Black

My Husband, Nisbet

Helen & Garfield Bottrell

Our Parents

Mom & Dad Wheeler

Family Members & Friends who have passed.

Our Parents

Parents & Grandparents

Those no longer with us in the Freeman & Morden families

Parents, Son & Brothers

Ray & Mary Henderson

*Mr. Kyong Sun Lee/Mrs. Ki Soon Lee and
Mr. Kenneth Lawton/Mrs. Ruth Lawton*

Loved Ones

Douglas & Doris Kelman

Our Parents

Husband, Bob and loved ones

Amy, William & Elke Owen

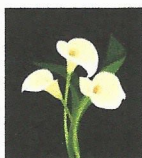
Husband, John

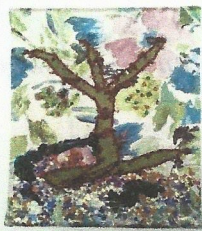
Family & Friends

Husband, Barry

Wife, Eleanor

*Also donating to Easter Flower Fund for the flowers in the Sanctuary are
Christine Alexander and Doreen Lowbridge.*





*Why did I create the banner
"The Tree of Life"*

by Janine Dekker

A tree is strong; the winds wrap around the trees over the years and turn and curve their stumps around, over time as they age. We climb them, we look up to them; the tree's roots hold the tree strong and tall and leans on the water from above, rivers and lakes; we still today rely on trees for wood as for our homes, furniture, tools; as trees grow old and die, so do we.

God has a purpose for us, and trees do as well, their leaves sprout and bloom, and then they fall... so do we... we join our souls together and make families, and we too fall, leaving our loved ones to sprout and bloom each season and carry on. That is Life.

I believe everyone has a story about their tree growing up, and a banner of "The Tree of Life" in the Quiet Room, just might bring back memories for those going through a funeral and having to sit in a quiet room, waiting to go through a loved one's funeral service in minutes to come, and having to see so many people in the church and afterwards. Memories to hold onto.



2016 January-through-March Report from the BEPC Session

~ Session's communication, to the congregation, of major items discussed and major decisions made at each Session meeting. ~

- Session continues to meet on the first Monday of each month.
- Burlington East will be holding its second Vacation Bible School, with the support of Kintail on the Road, during the week of August 8, 2016.
- Session reviewed and approved the Hamilton Presbytery visitation report draft. Highlights of this report were contained in the 2015 Annual Report.
- With the financial support of the Women's Auxiliary, Session has approved the ordering of new clip-on name tags. They are expected to arrive in late March or early April.
- The 20th Burlington Scouts group has been facing an issue with respect to the storing of their camping equipment. As sponsors of this group, we have agreed to allow them to place a storage container on the back corner of our parking lot. In addition, we will provide the 20th Burlington Scouts \$1500. towards the purchase of this unit. The money will come out of the Local Mission Fund.
- It is our turn to send a lay commissioner to the 2016 General Assembly which is being held at York University from June 3 through June 6. Gordon Fielding has agreed to be the commissioner representing Burlington East.
- A new group, SAVIS (Sexual Assault and Violence Intervention Services) of Halton, has started using the Quiet & Choir rooms weekly on Tuesday and Friday. This is being done as a community service although they are making a \$50. monthly donation to BEPC.
- Knowing that human sexuality is currently a topic within the Presbyterian Church in Canada (PCC), Session held an extra meeting on Saturday, February 20, 2016 to review and gain a better understanding of the PCC's current position on this matter. No changes to the current position are expected to be approved by General Assembly any time soon.
- Our ninth Anniversary Service will be held on Sunday May 1, 2016. Rev. Heather Vais will be joining us at that service and providing the message. For those of you who may not be aware, she was the first Interim Moderator of Burlington East and is currently a minister at Thornhill Presbyterian Church.
- The Burlington Presbyterian ministers continue to look at options for sharing a Youth Worker. They are currently trying to determine if there is another organization they could partner with that could fulfill this role.
- Session reviewed and approved the 2016 Budget prior to it being presented to the congregation in the 2015 Annual Report.

~ Respectfully submitted by your Session

BEPC FINANCIAL UPDATE

February 2016

	Envelope Givings	Presbyterians Sharing	Total Income	Total Expenses	Surplus/ Deficit
Year To Date Budget	\$24,919.16	\$2,250.00	\$31,689.16	\$31,713.66	-\$24.50
Year To Date Actual	\$23,652.50	\$3,082.00	\$33,129.45	\$34,293.03	-\$1,163.58
February Budget	\$12,459.58	\$1,125.00	\$15,844.48	\$15,844.33	\$0.15
February Actual	\$11,550.50	\$1,962.00	\$17,439.45	\$17,621.47	-\$182.02

NOTE: RED numbers reflect results that are below budget

The chart above provides the year-to-date and month-of-February financial results. The 2016 financial year is off to a good start, although Envelope givings are below budget. Total Income is above budget. This is due to greater than budget income to Presbyterians Sharing and PWS&D. Expenses are relatively in line as we cover off beginning of the year expenses, such as Winter Maintenance, Heat & Hydro and Natural Gas to mention a few.

Respectfully,
Your F&M Committee



- May 1 @ 10:30am - Anniversary Sunday (Rev. Heather Vais)
- May 5 @ 6:45am - 10th Annual Burlington Prayer Breakfast
- June 5 @ 10:30am – Communion Service
- June 26 @ 10:30am – Four church picnic – Crieff Hills Retreat

Christ is Risen!

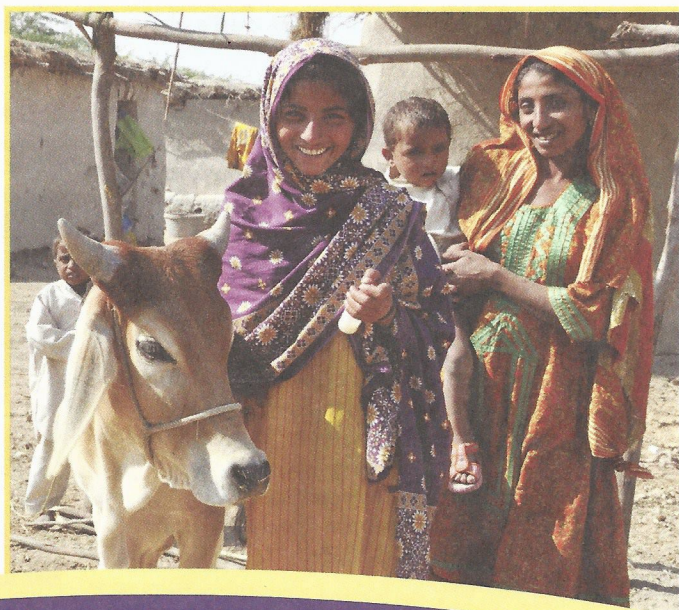
When we respond to poverty, hunger and conflict in our global village, we discover God's resurrecting power. The hungry are fed, the vulnerable are cared for, the sick are healed and the poor are raised up.

Inspired by God's promise of abundant life and rooted in the living hope of Jesus Christ, our church responds to the call to serve those in need with compassion, justice and love. Through PWS&D, we are working to restore human dignity, ease the pain of want and promote community cooperation.

Thanks to your support and faith in action, we are responding to the sick, the hungry and the vulnerable. We are responding with medical care, sanitation services and emergency relief. We are responding with educational opportunities, sustainable agriculture practices and skills training. Together, we are promoting human rights and supporting refugees.

Faithful to our calling, we respond together.

**This Easter,
please support
PWS&D.**



Presbyterian
World Service
& Development

Respond with us.
WeRespond.ca

The development and relief agency of The Presbyterian Church in Canada